



CISM

"We serve those who serve others."

The mission of the Central Shenandoah EMS Council CISM program is to provide education, support, and assistance to EMS Providers throughout the region for incidental or cumulative critical incident stress experienced in the performance of their jobs and/or in the event of major MCI events, natural disasters, or other contingencies.

WWW.CSEMS.ORG/AGENCIES/CISM

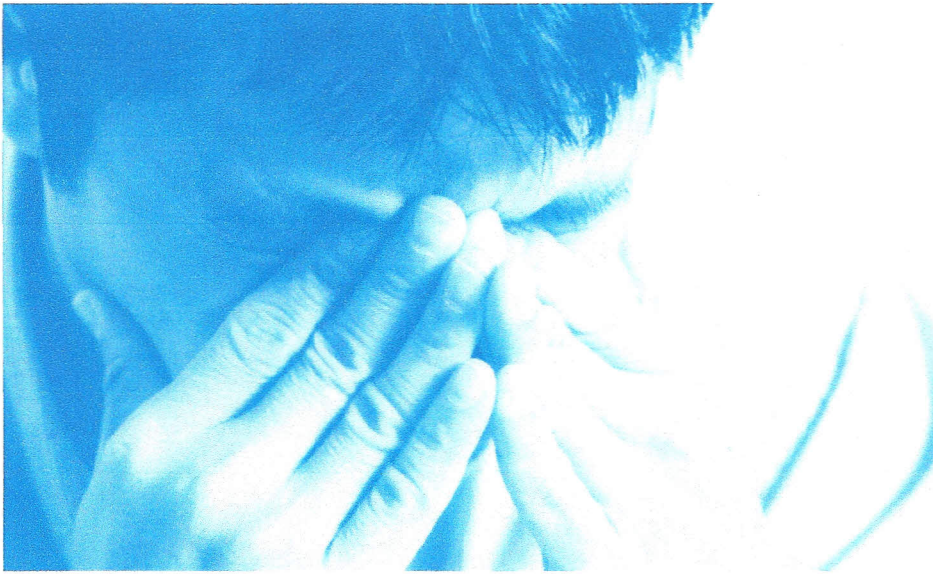
Call for immediate help 540-245-5501

WHAT WE DO

- Pre-incident training
- On-site support
- Psychological first aid
- Peer-to-peer support
- Continued care referral
- Provide customized training



Central Shenandoah
EMERGENCY MEDICAL SERVICES
COUNCIL



CISM

Critical Incident Assessment

Any incident faced by emergency response personnel that causes them to experience unusually strong emotional involvement may qualify for "Critical Incident Stress Debriefing."

The following are examples of incidents that may be selected for debriefing:

1. Serious injury or death of an emergency personnel working at an incident, enroute to an incident, or any other operations (i.e. training). *
2. Mass casualty incidents. *
3. Suicide of a crew member. *
4. Serious injury or death of a civilian resulting from emergency operations (i.e. ambulance accident), etc.
5. Death of a child, or violence to a child.
6. Loss of life of a patient following extraordinary and prolonged expenditure of physical and emotional energy during rescue efforts by emergency personnel.
7. Incidents that attract extremely unusual or critical news media coverage.
8. Any incident that is charged with profound emotion.
9. An incident in which circumstances were so unusual or the sights and sounds so distressing as to produce a high level of immediate or delayed emotional reaction.

* Indicates high priority for minimizing personnel exposure at the scene.

Notification

The CISM Team should be notified as soon as possible following the incident which requires a debriefing.

The mechanism for notification is listed below. The Team relies on the "Eyes and Ears" of personnel in the field for notification. Eyes and Ears refer to personnel who are aware of CISM services available and who are alert to critical incident events.

TO ACTIVATE THE CISM TEAM

Call the Augusta County
Emergency Communications
Center:

540-245-5501